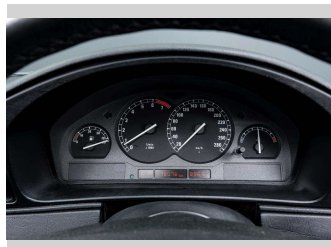



# 1995 BMW 840Ci




**Purchase Price** **\$46,990**  
Includes GST, Registration & Licensing

Finance may be available on this vehicle. Ask one of our friendly staff for more information.



Gain peace of mind with Mechanical Breakdown Insurance. **Ask us how.**



**Top features**  
None Listed

Body Style  
**Coupe**

Odometer  
**179,076 km**

Engine  
**3982 cc, Internal Combustion**

Fuel Type  
-

Transmission  
**Automatic**

Wheels  
-

VIN  
**WBAEF620X0CB97746**

Interior  
**Black**

Safety  
-

Reg No.  
**TR1543**

Ext Colour  
**Blue**

History  
**NZ New, 5 owners**

Seats  
**Leather**

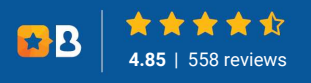
CO2 Emissions  
-

Energy Economy  
-

**Stock ID: 3304**



Southern Specialist Cars | Phone 021 778 445 | Email info@southernspecialistcars.co.nz  
433 Selwyn Street, Addington, Christchurch 8024, New Zealand  
www.southernspecialistcars.co.nz



4.85 | 558 reviews